



VISTA 29

9017 W STATE HIGHWAY 29 GEORGETOWN, TEXAS 78628



SUBLEASE

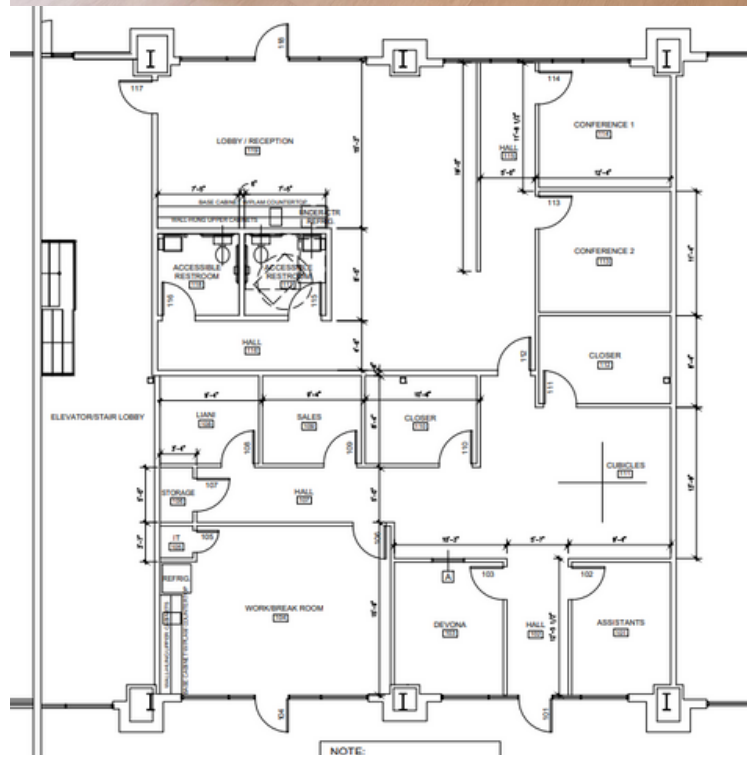


- SUITE : 105 & 106
- SIZE : 3,012 RSF
- BASE RATE : \$28.50 SF – NEGOTIABLE
- NNN : \$8.50 SF
- EXPIRATION DATE : 9/30/2027
(WILL CONSIDER A SHORTER TERM)

MATT WATSON // 512-699-2104 MOBILE
MATT@AUSTINOFFICESPACE.COM



- NEW CONSTRUCTION WITH HIGH-END FINISHES
- 1ST FLOOR SPACE WITH A LOT OF NATURAL LIGHT
- FORMER TITLE COMPANY OFFICE
- FULLY FURNISHED SPACE
- MOVE-IN READY - WIRED WITH PHONE & DATA
- A MIX OF PRIVATE OFFICES & OPEN SPACE
- PLENTY OF FREE PARKING



AOS **AUSTIN**
OFFICE SPACE

 exis global tenant representation